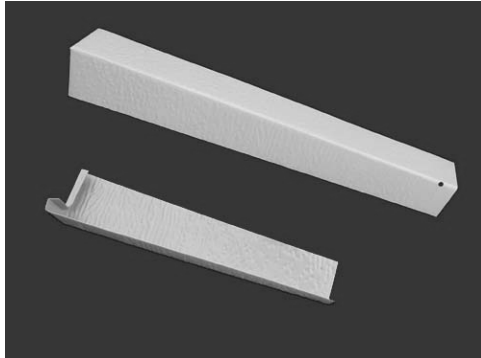


199 SERIES CORNERS



Designed to be used with either hardboard, fiber cement or wood siding. The 199 Series Corners are manufactured with a full wraparound lower lip requiring no bottom nail. Manufactured in smooth or wood grain textured. 0.015 aluminum, the outside is primed and ready to paint. The inside is coated with an epoxy backer to prevent corrosion. The corners come in a wide variety of lengths and return sizes to fit most available hardboard or cement fiber plank siding. Face width per side at the bottom 1-3/4", tapering to 1-1/4" at the top.

(NOTE: Profiled shapes do not have wraparound lip, and require face nailing.)

Packaging – 100/CTN.

| Length | Return Lip | | | | | | Ship Weight |
|--------|-------------------------|-------|-------------------------|--------------------------------|-------|------|-------------|
| | 1/4" (Fits Surelock) | 5/16" | 3/8" (Fits 1/2" S/A) | 13/32" (Fits 1/2" Mas. S/A) | 7/16" | 1/2" | |
| 6" | X | X | X | X | • | X | 3.45 lbs |
| 6-1/4" | X | • | X | X | X | X | 3.5 lbs |
| 7-1/4" | X | • | X | X | X | X | 3.95 lbs |
| 8" | • | X | • | X | • | • | 4.25 lbs |
| 8-1/4" | X | • | X | X | X | X | 4.3 lbs |
| 9-1/4" | X | • | X | X | X | X | 4.80 lbs |
| 9-1/2" | X | X | X | X | • | • | 5 lbs |
| 12" | X | • | • | X | • | • | 6 lbs |

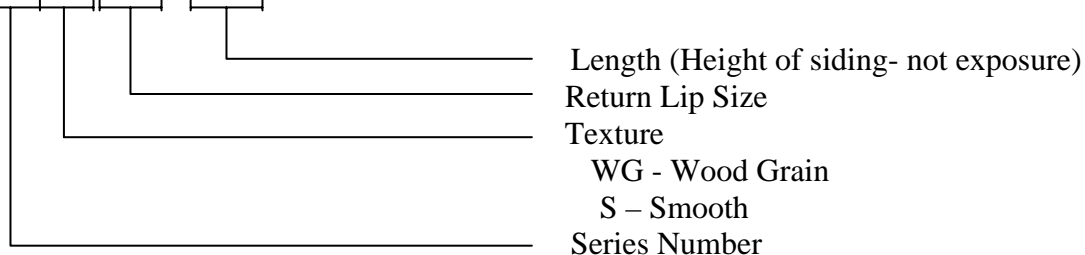
• – Stock, X – Available on special order

ADDITIONAL STOCK ITEMS

| Part Number | Description |
|-----------------------|---------------------------------|
| 199VGx10 HS | 1/4" x 10" HardieShingle™ |
| 199VG 1/4x12 HS | 1/4" x 12" HardieShingle™ |
| 199VG 1/2x10-1/2 WS | 1/2" x 10-1/2" Weyerhaeuser |
| 199VG 5/16 X 8-1/4 HS | 5/16 x 8-1/4 Perfection Shingle |
| 199VG 5/16 X 9-1/4 HS | 5/16 x 9-1/4 Perfection Shingle |

PART NUMBERING GUIDE

199WG 5/16 x 8-1/4



INSTALLATION INSTRUCTION

FOR 199 SERIES CORNERS

1. Install the lap siding as per manufacturers recommendations. While installing, please be sure to observe the following cautions:

- a. Be sure to run the siding long enough at the corners. The top of the planks should almost meet at the corners. If the siding is installed 'short' at the corners, the siding corners may not be long enough to adequately cover the siding at the bottom. See Figure 1.

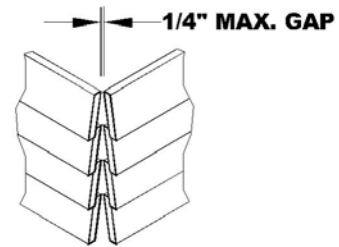


Figure 1

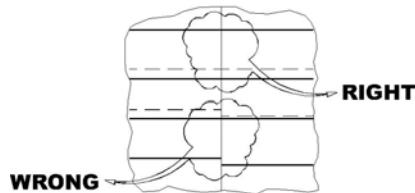


Figure 2

- b. Be sure that the bottom edge of two courses line up. If not, one side or the other will have a gap when the corner is installed. See Figure 2.
- c. If you are bottom nailing the siding, do not nail within 4" of the corner.

2. Starting with the bottom course, carefully slide the first corner up and under the second course. Continue until the bottom wrap around lip is fully fitted to the bottom courses.

3. Nail diagonally into the corner stud, using a galvanized nail with a head of at least 3/16", and a length sufficient to penetrate the stud at least 1". See Figure 3.

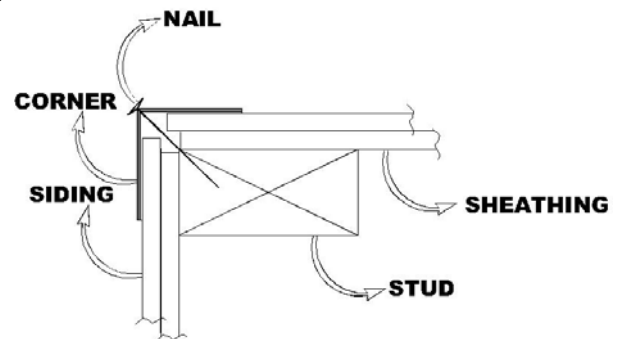
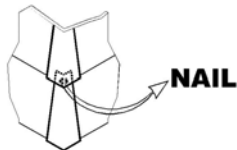


Figure 3

4. While driving the nail, pay attention to the vertical and horizontal alignment of the siding corner. By drifting the nail left/right/up/down, it is fairly simple to ensure good alignment of the corner. Drive the nail so that the corner is snug, but do not overdrive the nail, as the corner will become distorted and have to be replaced. Do not use a power nailer.
5. Repeat steps 2-4, working from the bottom up. Trim the last corner to fit, and nail on the sides (top corner only).